

Cancer Prevention and Control Research Network (CPCRN) Winter Meeting: *Welcome & Network Progress*

Stephanie B. Wheeler, PhD, MPH
University of North Carolina at Chapel Hill
Principal Investigator, CPCRN Coordinating Center

January 27, 2022

TRENDIZISST

0 MI CRON

TODAY'S AGENDA

Time (Eastern)	Session Title
11:00 AM ET	CPCRN Orientation/ Becoming More Involved in the Network, <i>Optional</i>
11:45 AM	<i>Break</i>
12:00 PM	Welcome and Network Progress
12:15 PM	3 Workgroup Presentations
12:45 PM	Group Photo (<i>Bring an accessory for a funny photo.</i>)
12:50 PM	<i>Break</i>
1:00 PM	Integrating Cancer Control with Shifting Community Priorities, A CPCRN Community Partner Panel
2:15 PM	<i>Break</i>
2:30 PM	Dr. Lisa Richardson, CDC Updates and Priorities with Q&A
3:00 PM	CPCRN Strategic Planning Pre-Work Session - SWOT
3:50 PM	<i>Break</i>
4:00 PM	Interest Group Presentations
4:30 PM	NCI Updates with Q&A
4:50 PM	Closing Remarks
5:00 PM	Adjourn



A FEW REMINDERS & THOUGHTS:

- Please remain muted unless you are talking in the meeting (note we'll have lots of Q&A and open chat opportunities to unmute!)
- Feel free to leave cameras off or on, as you prefer
- We understand that life is happening all around you! We love seeing kids, pets, outdoor settings, etc. and appreciate you spending your time with us today
- We want this virtual meeting to be as interactive as possible!
 - *Please use the chat to join the conversation. For now, please tell us your name + your affiliation + what you're looking forward to in 2022*
 - *Please tweet about exciting things you hear today @CPCRNCancer #CPCRNC2022*



Cancer Prevention and Control
Research Network

CPCRN VISION & MISSION

Vision: *Reduce the burden of cancer in U.S. populations and eliminate cancer disparities*

Mission:

- Accelerate the adoption and implementation of evidence-based cancer prevention and control strategies in communities
- Enhance large-scale efforts to reach underserved populations and reduce their burden of cancer
- Deepen our understanding of the predictable processes that achieve those goals

Develop the D&I workforce in cancer prevention



Cancer Prevention and Control
Research Network

CPCRN Network Map

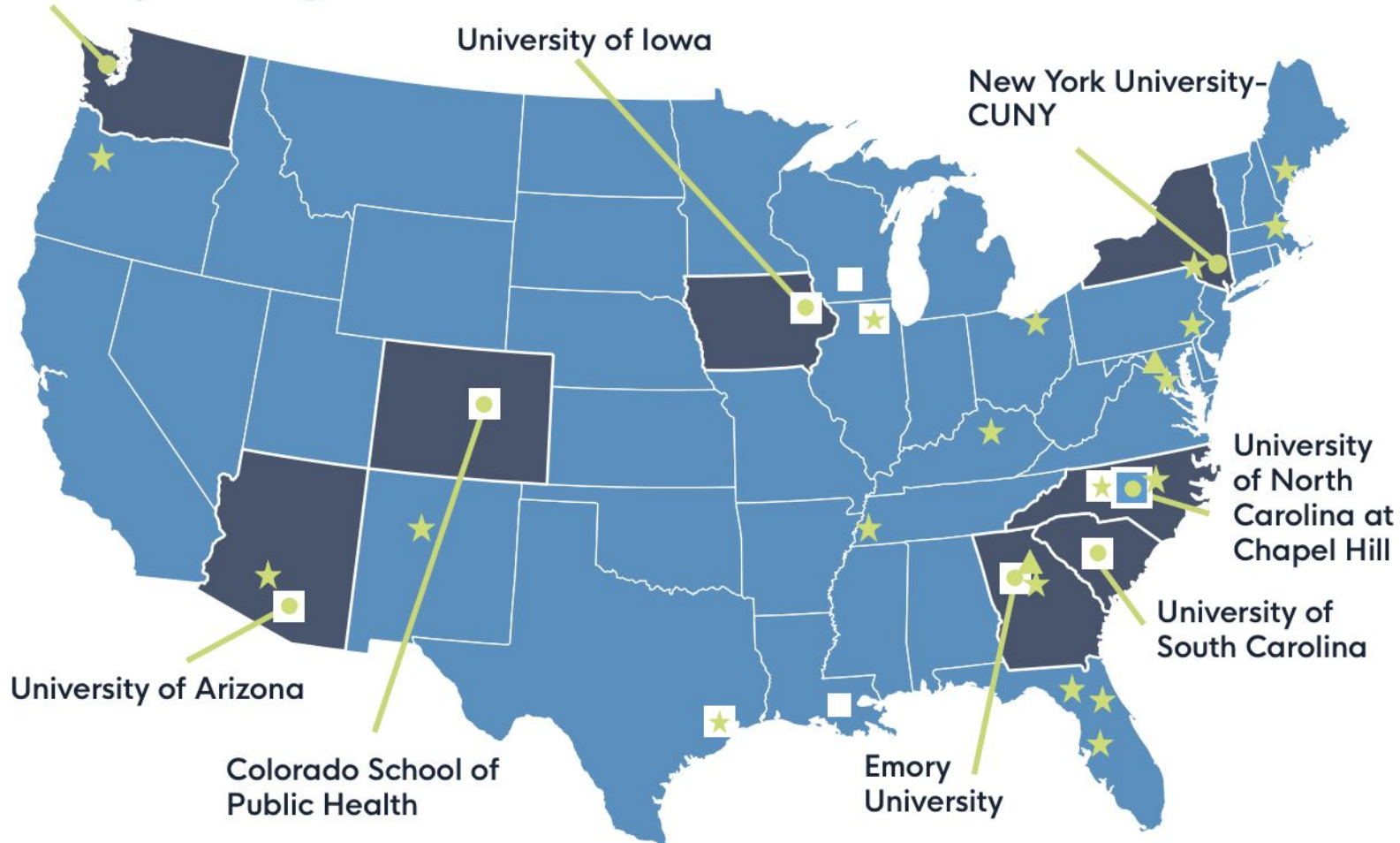
Over 230 Network Members

University of Washington

University of Iowa

New York University-
CUNY

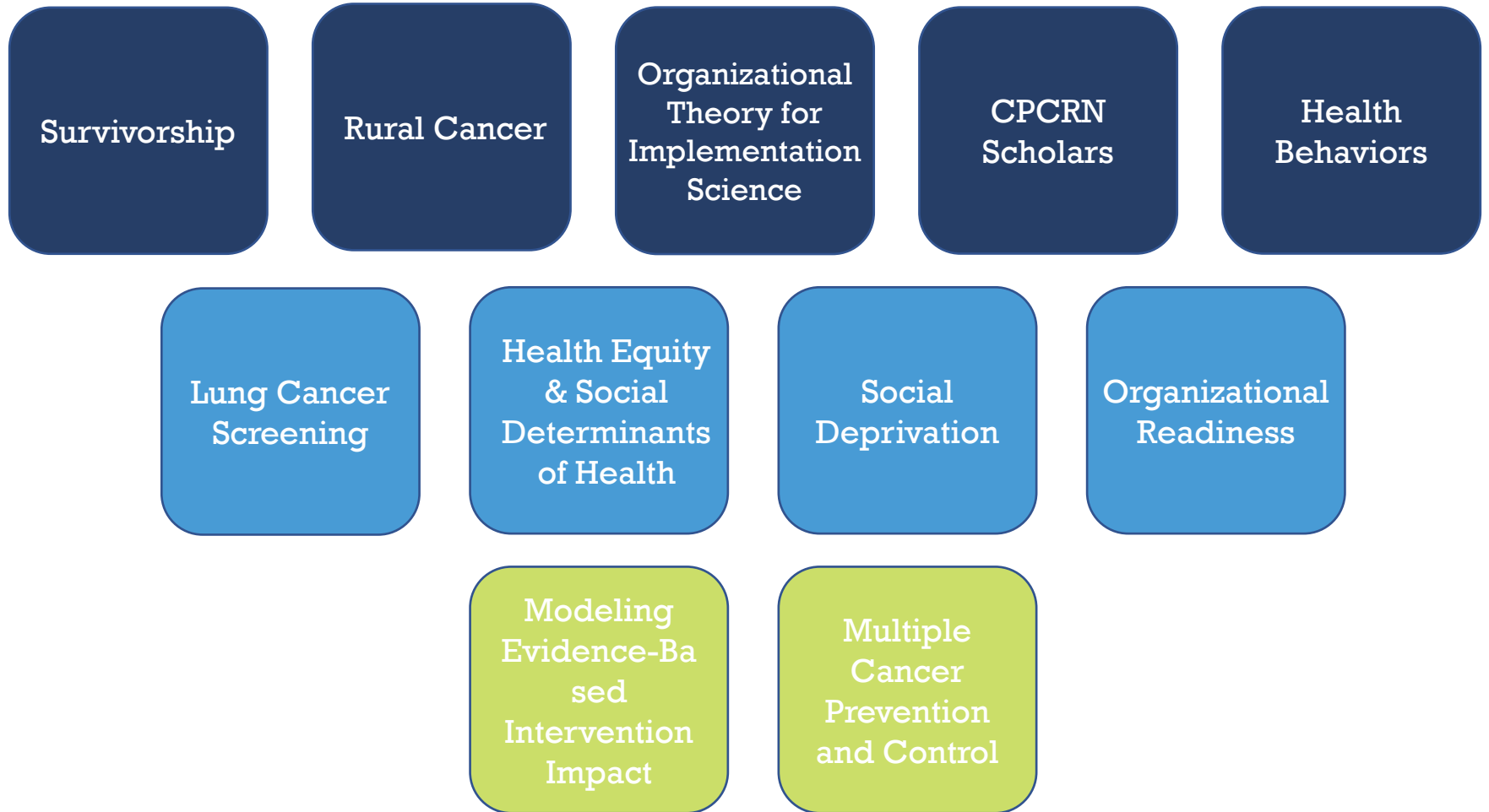
Switzerland



Legend

- Funded Centers (158 members)
- Coordinating Center (5 members)
- ▲ Federal Agency Partners (18 members)
- ★ Affiliate Members (34 members)
- CPCRN Scholars (17 scholars, current cohort)

Overview of Current Cross-Center Activities



IMPACT OF CPCR N

By the Numbers

	Funded Grants	Publications	Presentations	Trainings
Past Year (FY '20-'21)	\$44.8M Awarded	155 Published	98 Presented	23 Delivered
CPCR N5 (Years 1&2)	\$69.5M Awarded	302 Published	209 Presented	39 Delivered
All Time (Since '04)	\$740M Funding Awarded	2,092 Works Published	2,208 Presentations Delivered	93 Trainings Delivered* <small>*past 5 years only</small>



Cancer Prevention and Control
Research Network

IMPACT OF CPCRNR

Beyond the Numbers

CPCRNR Scholars Spotlight

- The CPCRNR Scholars Program was initiated in 2020 to educate students, postdoctoral fellows, junior faculty, practitioners, and other health professionals in dissemination and implementation (D&I) science focused on cancer prevention and control and health equity.
- To date, **37** Scholars have participated in the CPCRNR Scholars program, including 20 who have graduated from the program. **100%** of the Scholars from the first cohort plan to remain engaged with CPCRNR.

Workgroup Co-Chairs



Daniela Friedman, PhD
University of South Carolina



Cam Escoffery, PhD
Emory University

Workgroup Project Directors



Sam Noblet, MPH
University of South Carolina



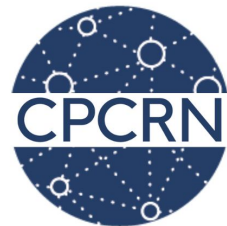
Courtney Petagna, MPH
Emory University



Cancer Prevention and Control
Research Network

In CPCRNR5 Year 2, Network members:

- Took part in **70** new research initiatives, including a variety that were newly developed or adapted to address issues related to or stemming from the pandemic
 - *CPCRNR investigator team from Ulowa engaged across a large group of NCI-designated cancer centers to study the impact of COVID-19 and social distancing on cancer-related behaviors.*
 - *NYU-CUNY investigators receive 5 awards to address issues ranging from rapid acceleration of testing to the syndemics of mental health, poverty, and COVID-19.*
- Received **\$11.5 Million** in funding that will support new COVID-19 research initiatives
 - *Colorado Cancer Screening Program was refunded; will address service gaps from procedural bans during COVID-19.*
 - *Emory investigator evaluates scalability of the SurvivorLink program, an online personal health record for caregivers and survivors, now programmed with questions about COVID-19 attitudes, beliefs, and behaviors.*



IMPACT OF CPCR

Beyond the Numbers, Continued

Health Equity Spotlight

- Of our CPCR Centers, **100%** reported one or more initiatives developed with a principle aim of promoting health equity.
 - **UNC's team ('4CNC') carried out five core projects**, all of which placed a focus on health equity. **PharmFIT**, for example, aims to increase CRC screening in rural areas by going through pharmacies.
 - Through the FIT Optimization project, **UW partnered with a FQHC to test and optimize strategies to increase rates of colorectal cancer (CRC) screening among Spanish-speaking patients with limited English proficiency (LEP).**
 - A team of **investigators at USC interviewed rural leukemia patients to investigate treatment adherence and other health inequities related to access to care.**
- Centers received **23** funding awards for studies designed to promote health equity and reduce disparities, totaling **\$22.9M.**
 - **Arizona focused several efforts around Mexican-origin Hispanic populations**, including one study looking at dietary patterns and non-alcoholic fatty liver disease risk.
 - **NYU-CUNY investigators collaborated on RADx-UP to identify effective strategies to reduce COVID-19 inequities by testing delivery of acceptable testing options among local public housing residents.**



CPCRN Resources

CPCRN
Cancer Prevention and Control Research Network

Member Resources | Directory | Email Members | Calendar | Contact | Log In

HOME ABOUT NEWS PROJECTS PUBLICATIONS PRESENTATIONS RESOURCES TRAINING

DIRECTORY 242 members, filtered to 7



Select letter to filter by last name

ABCDEFGHIJKLMN **O** PQRSTUWXYZ [show all](#)

Sarah Nash, PhD, MPH, CPH
sarah-nash@uiowa.edu
University of Iowa
College of Public Health, Dept. of
Epidemiology
5418 CPHB
Iowa City, Iowa 52242
Phone: 319-467-4282
Network Site: University of Iowa

Gila Neta, PhD, MPP
netagil@mail.nih.gov
NCI, Division of Cancer Control and
Population Sci
9609 Medical Center Drive
Room 4E442, MSC 9778
Bethesda, Maryland 20892-9778
Phone: 240-276-6785
Network Site: National Cancer Institute
(NCI)

Victoria Ngo, PhD, MS
victoria.ngo@sph.cuny.edu
CUNY School of Public Health and Health
Policy
55 W. 125th St.
New York, New York 10027
Phone: 626-780-7899
Network Site: New York University – City
University of New York

Sam Noblet, MPH
noblet@mailbox.sc.edu
University of South Carolina
Cancer Prevention and Control Program
915 Greene Street, Suite 537
Columbia, South Carolina 29208
Phone: 803-777-5887
Network Site: University of South Carolina

Wynne Norton, PhD
wynne.norton@nih.gov
National Cancer Institute
Division of Cancer Control and Population
Sciences
9609 Medical Center Dr, #3E424
Rockville, Maryland 20850
Phone: 240-276-6875
Network Site: National Cancer Institute
(NCI)

Nicole Novak, PhD
nicole-novak@uiowa.edu
145 N. Riverside Drive
N400 CPHB
Iowa City, Iowa 52242
Phone: 319-335-9750
Network Site: University of Iowa

Tomas Nuño, PhD
tnuno@email.arizona.edu
1501 N. Campbell Ave.
AHSL 4169B
PO Box 245057
Tucson, Arizona 85724
Phone: (520) 626-1379
Network Site: University of Arizona

<http://www.cpcrn.org/directory>



Cancer Prevention and Control
Research Network

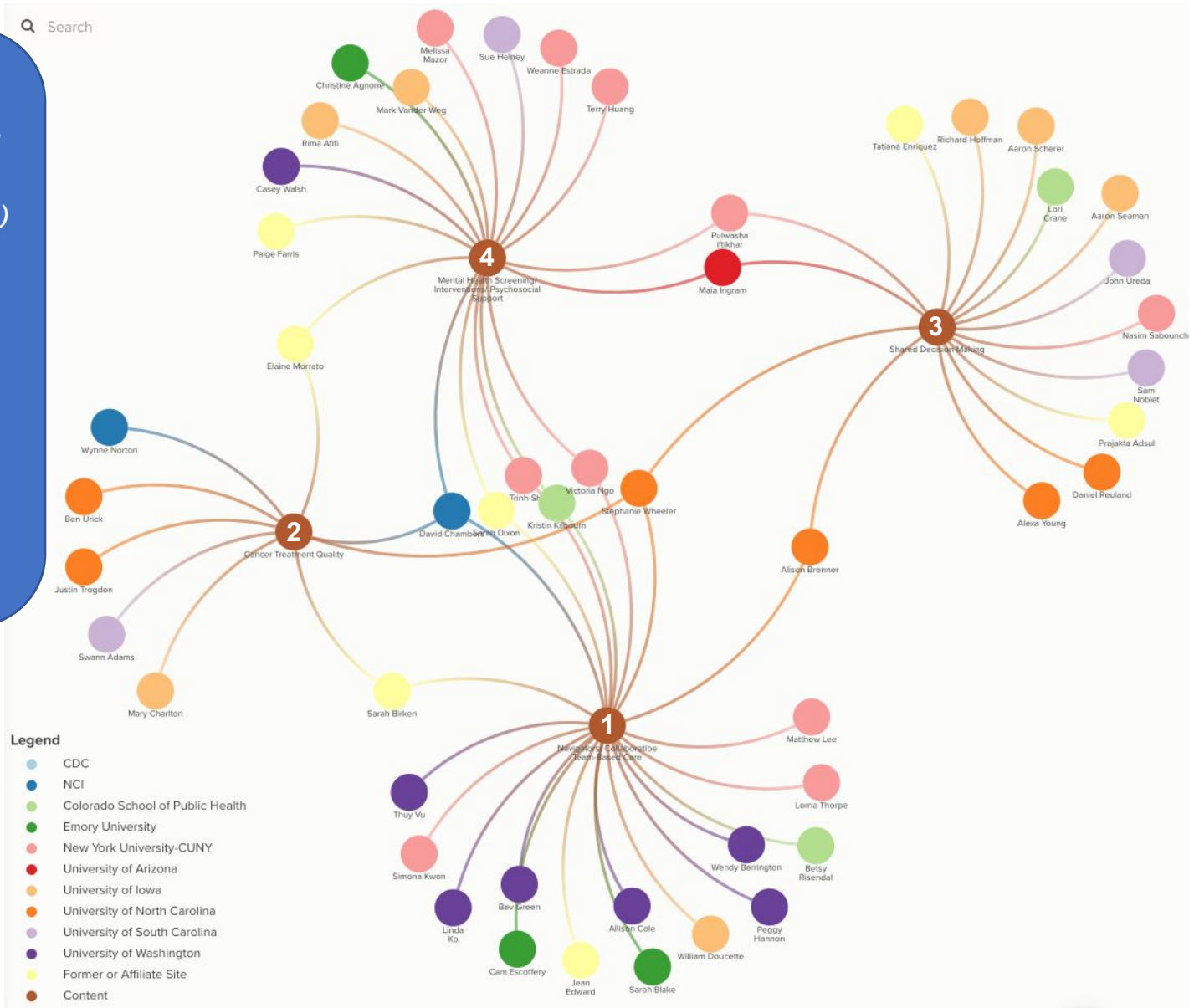
CPCRN Kumu Relationship Map of Members' Areas of Content Expertise: Cancer

Treatment

Content Expertise: Cancer Treatment

(represented by numbered brown dots; other dots represent CPCRN members)

1. Navigators/
Team-Based Care
2. Cancer Treatment Quality
3. Shared Decision Making
4. Mental Health/
Psychosocial Support



CONNECT WITH CPCRNC!



Find us on the web
[@www.CPCRNC.org](http://www.CPCRNC.org)



Follow us on Twitter
[@CPCRNCancer](https://twitter.com/CPCRNCancer)



Like us on Facebook
[@CPCRNC](https://www.facebook.com/CPCRNC)

Subscribe to our newsletter
[@go.unc.edu/CPCRNCNews](http://go.unc.edu/CPCRNCNews)

Questions?

Stephanie B. Wheeler, PhD MPH

Principal Investigator

CPCRNC Coordinating Center

919.966.7374

stephanie_wheeler@unc.edu

 [@StephWheelerUNC](https://twitter.com/StephWheelerUNC)

Becky Lee, MS

Project Director

CPCRNC Coordinating Center

919.966.2812

beckylee@unc.edu



Cancer Prevention and Control
Research Network